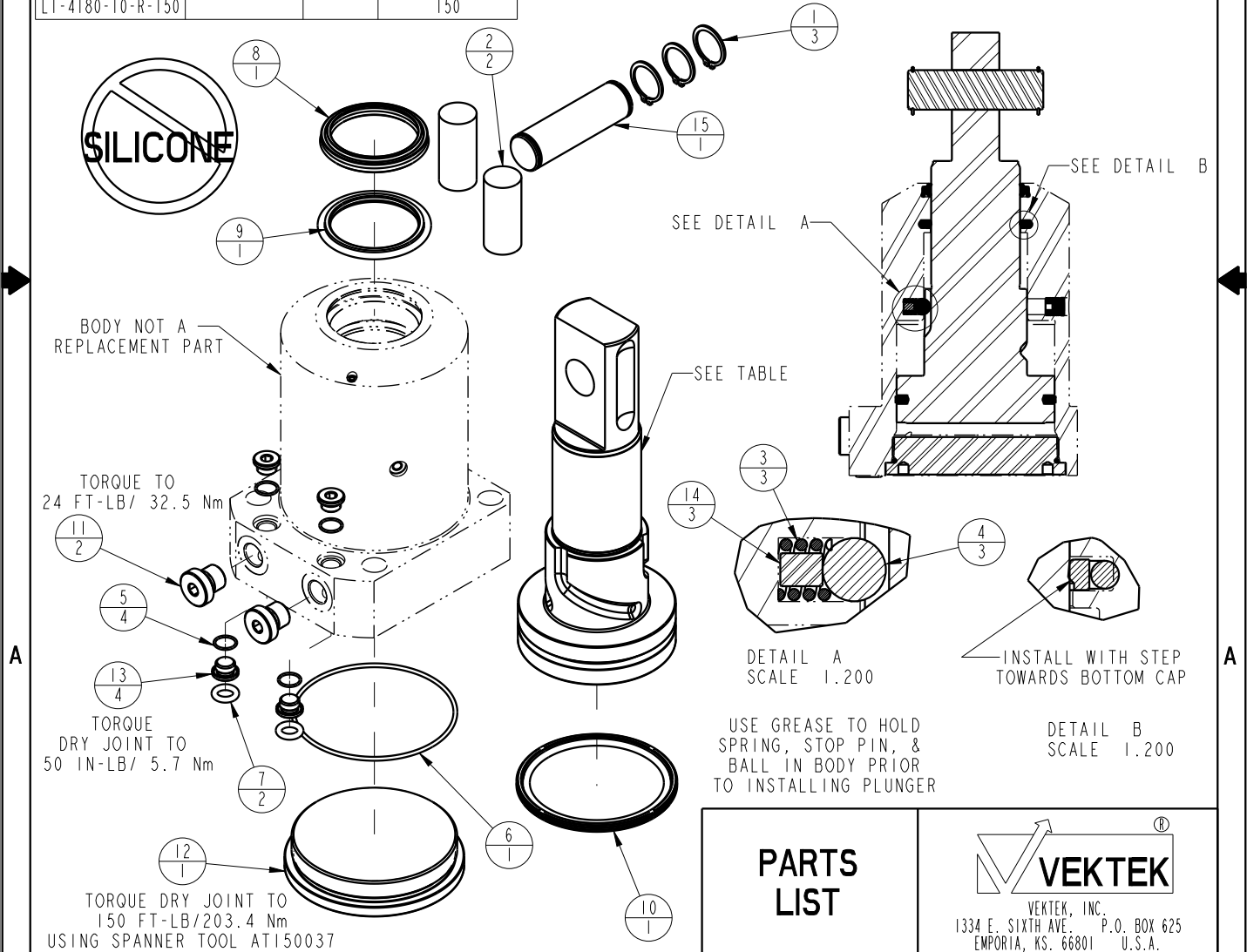


| ASSEMBLED MODEL NO. | PLUNGER PART NO. | CAM STYLE | ASSEMBLED ORIENTATION |
|---------------------|------------------|-----------|-----------------------|
| LI-4180-10-S-0 | 81400216 | STR | 0 |
| LI-4180-10-S-60 | | | 60 |
| LI-4180-10-S-120 | | | 120 |
| LI-4180-10-S-30 | | | 30 |
| LI-4180-10-S-90 | | | 90 |
| LI-4180-10-S-150 | | | 150 |
| LI-4180-10-L-0 | 81400226 | LH | 0 |
| LI-4180-10-L-60 | | | 60 |
| LI-4180-10-L-120 | | | 120 |
| LI-4180-10-L-30 | | | 30 |
| LI-4180-10-L-90 | | | 90 |
| LI-4180-10-L-150 | | | 150 |
| LI-4180-10-R-0 | 81400236 | RH | 0 |
| LI-4180-10-R-60 | | | 60 |
| LI-4180-10-R-120 | | | 120 |
| LI-4180-10-R-30 | | | 30 |
| LI-4180-10-R-90 | | | 90 |
| LI-4180-10-R-150 | | | 150 |

| NO | QTY | PART NO | DESCRIPTION | SEAL KIT | CLEVIS PIN KIT |
|-----|-----|----------|--|----------|----------------|
| 1 | 3 | 23050045 | RING, RTNG, EXT, 0.781 | | X |
| 2 | 2 | 23340006 | STOCK, CORD, .75 X 1.63, 50, NBR | | X |
| 3 | 3 | 23350087 | SPRING, COMPRESSION | X | |
| 4 | 3 | 23650011 | BALL, TUNGSTEN-CARBIDE, 8mm | X | |
| 5 | 4 | 39051080 | O-RING, (10mm X 1) | X | |
| 6 | 1 | 39051086 | O-RING, (80mm X 2) | X | |
| 7 | 2 | 39051088 | O-RING, (8mm X 3) | X | |
| 8 | 1 | 39053047 | SEAL, WIPER, SNAP IN, WED, 45, 94A, AU | X | |
| 9 | 1 | 39056007 | SEAL, STEP, ROD, 45 | X | |
| 10 | 1 | 39056026 | SEAL, CAP, PISTON, 80, 90A, AU GRPHT FLD | X | |
| 11 | 2 | 43068006 | PLUG, PORT, HOLLOW HEX, G1/4 | | |
| 12 | 1 | 81400156 | CAP, LC/SC, 7MPa, 80B | | |
| 13 | 4 | 81400201 | PLUG, MANIFOLD, 7MPa, M10 | | |
| 14 | 3 | 81400204 | PIN, STOP, BALL, METRIC, 8mm BALL | X | |
| 15 | 1 | 81400276 | PIN, ROCKER, SC, 7MPa, 80B | | X |
| N/A | N/A | L6014800 | KIT, SEAL, SC, 7MPa, 80B | NOTED | N/A |
| N/A | N/A | L6214800 | KIT, CLEVIS PIN, SC, 7MPa, 80B | N/A | NOTED |



| | |
|-------------------|---|
| PARTS LIST | VEKTEK VEKTEK, INC. 1334 E. SIXTH AVE. P.O. BOX 625 EMPORIA, KS. 66801 U.S.A. |
| | PARTS LIST, ASSY, SC, BF, 7MPa, 80B, CLEVIS ***** SIZE A LPL1435 REV B |

| | | | | |
|---------------|--|----------------|------------|----------|
| B | 3273 | RELEASE | JDW | 08/15/18 |
| REV | IN ACCORDANCE WITH ECN | EFFECTIVE DATE | REVISED BY | DATE |
| DRW BY: MAJ | DRAWING STATUS: Released | | | |
| DATE: 4-16-15 | PRODUCTION APPROVED FOR RELEASED STATUS ONLY | | | |

ASSEMBLIES AFFECTED
SEE ASSEMBLY MODEL NO.
TABLE ABOVE

SHEET 1 OF 1